



Berger Fosroc Product Guide for Building Construction



Leaders in constructive solutions



constructive solutions

Berger Fosroc Limited

Corporate Address:

'Berger House', House # 08, Road # 02, Sector # 03, Uttara Model Town, Dhaka 1230, Bangladesh.

Telephone(Hunting) : +880248953665, Fax : +880248951350,

e-mail : enquiry.bangladesh@bergerfosroc.com

Website : www.bergerfosroc.com



constructive solutions

Our Profile

Berger Fosroc Limited, Bangladesh is a new joint venture entity formed between Berger Paints Bangladesh Limited and Fosroc International Limited on 31st January 2018.

Berger is one of the renowned names in the paint industry and the country's major specialty paint business with products and ingredients dating back more than 250 years. Over the decades, Berger has evolved to become the leading paint solutions provider in Bangladesh and has diversified into every sphere of the industry from Decorative Paints to Industrial, Marine and Powder Coatings.

Fosroc International is the flagship company of the JMH Group which over the years has emerged as a leading supplier of construction products and solutions across the world. Fosroc world-wide backed by its rich history of over 75 plus years of international presence has operating companies spread across Europe, Middle East, India and Asia besides other emerging geographies, with over 20 manufacturing locations and distribution network in over 100 countries worldwide.

Berger Fosroc Limited in Bangladesh will provide complete solutions to all sectors of the construction industry, specializing in solutions for the construction of buildings, industrial facilities, power plants and to all types of transportation and civil infrastructure.

This new entity will be supported by the parent companies Group Research & Development facilities located in various International locations with state of the art laboratories and a team of dedicated Scientists pioneering product development and innovation.

Berger Fosroc's wide range of constructive solutions portfolio includes

- Cement Grinding Aids such as Cemax, Auracem
- Admixture products such as Conplast, Structuro, Auramix, Auracast
- Waterproofing products such as Supercast, Nitoproof, Proofex
- Precision Grouts & Anchors such as Conbextra, Cebex, Lokfix
- Joint Sealants such as Thioflex, Nitoseal
- Flooring products such as Nitoflor, Cemtop, Adhesives
- Concrete Repair & Protection such as Renderoc, Nitomortar, Nitocote, Dekguard.

Contents

1. Integral Waterproofing Admixtures		7. Surface Treatment	
Conplast WL Xtra	04	Renderoc Ready Plaster	27
Conplast WP90 Powder	05	Nitoproof Damp Protect	28
2. Waterproofing Products		RenderocWallputty	29
Hydroproof Xtra	06	Reebaklens	30
Brushbond	07	Reebaklens Salt Wash	31
Brushbond RFX	08	Reebol	32
Brushbond Roof Guard	09	Reebol Emulsion XTRA	33
Nitocote CM 210	10	Concure WB	34
Nitoproof 100/120	11	8. Crack Fillers	
Nitoproof 600 STD	12	Decofill	35
3. Grouts and Anchors		Renderoc CS	36
Lokfix E	13	9. Joint Sealants	
Cebex 100	14	Thioflex 600	37
Conbextra STD	15	10. Tile Adhesive	
Conbextra GP1	16	Nitotile GP	38
Conbextra EP10	17	Nitotile GPX	39
4. Concrete Repair		Nitotile GTA	40
Renderoc Plug	18	Nitotile MPA	41
Renderoc SP 40	19	Nitotile Grout	42
Renderoc RG	20	Nitotile EPW Grout	43
5. Bonding Agents		11. Disinfectant	
Conbextra Block		Reebaklens Disinfectant	44
Joining Mortar	21		
Nitobond EP	22		
Nitobond SBR Latex	23		
Nitobond AR/ AR STD	24		
6. Protective Coatings			
Nitocote SN 522	25		
Nitozinc Primer	26		



Integral waterproofing admixture with advanced technology

PAANCH KA DUM

5 BENEFITS / ADVANTAGES

- Advanced technology
- Corrosion resistance
- High strength
- Cohesive mix
- Durability

AREAS OF APPLICATION

- Recommended for all types of concrete and plaster.

DOSAGE

- 200 ml per 50 kg of cement

PACKING

- 200 ml, 1, 5, 10, 20, 50 and 200 L packs

MIXING/USAGE

- Measure 200 ml of Conplast WL Xtra for 50 kg bag of cement.
- Mix thoroughly with water to be used for making concrete or mortar.
- Do not add Conplast WL Xtra directly to dry concrete or mortar.



Integral waterproofing powder additive for concrete and mortar

ADVANTAGES

- Easy to use, simple application
- High quality waterproofing
- Improves workability

AREAS OF APPLICATION

- Conplast WP90 powder is suitable for use with sand/cement mortars where it is required to reduce permeability
- It can be used in external plastering of roof and balcony screeds

DOSAGE

- 1 kg per 50 kg bag of cement

PACKING

- 1 and 25 kg packs

MIXING/USAGE

Sprinkle the measured quantity of Conplast WP90 powder evenly over the cement and mix thoroughly for 2 minutes, until an even colour is obtained followed by addition of required quantity of water.

Hydroproof Xtra



Acrylic polymer modified waterproof coating for concrete and masonry surfaces

ADVANTAGES

- Non-toxic, economical coverage (45 sqft or 4.5 m²/ltr in two coats) non-flammable and user-friendly
- Excellent adhesion to concrete and masonry surfaces
- Protects concrete and mortar from elements such as wind, rain and sunlight
- Breathable allows inside water vapour to escape

AREAS OF APPLICATION

- Roofs, terraces and balconies as a sandwich
- Small span roofs, terraces and pools screed / Brick bat Caba is over covered

COVERAGE

- Primer Coat: 16-17 m²/litre/coat
- Top coat: 4.5 - 5 m²/litre/coat
- Two top coat application recommended

PACKING

- 1, 5 and 20 litre containers

MIXING/USAGE

Before application, the surface should be primed with Hydroproof Xtra as follows:

1 part of Hydroproof : 2 parts of water:4 parts of cement

Over the primed surface Hydroproof Xtra applied in two coats mixed with neat cement in the ratio of 1:2.

Brushbond



Acrylic polymer modified two component elastomeric waterproofing membrane coating for concrete and masonry surfaces

ADVANTAGES

- Applied directly to the damp concrete and masonry
- Excellent adhesion and non-toxic
- Ideal for damp proofing basements concrete roofs
- Breathable allows transmission of water vapour to escape

AREAS OF APPLICATION

- Provides a seamless waterproof coating suitable for use in water tanks, reservoirs, swimming pools and roofs

COVERAGE

- 16 - 18 m² at 1 mm thickness (23 kg powder + 4 litre liquid)
- 4 - 4.5 m² at 1 mm thickness (6 kg powder + 1 litre liquid)

PACKING

- 23 kg powder + 4 litre liquid polymer pack
- 6 kg powder + 1 litre polymer pack

MIXING/USAGE

Brushbond liquid is mixed with equal volume of water with a slow speed drill and the powder component is added gradually to the liquid to avoid lump formation and mix for 2 - 4 minutes. Keep on stirring during application.

Brushbond components	Indl. pack	Small pack
Brushbond Powder	23 kg	6 kg
Brushbond Liquid	4 L	1 L
Water	4 L	1 L



High performance two components elastomeric cementitious waterproof coating for roof, watertanks and reservoirs

ADVANTAGES

- Durable in all climate conditions and UV resistant
- Excellent barrier to carbon dioxide, chloride and sulphate attack
- Allows water vapour to escape from the structure
- Good crack accommodation capacity

AREAS OF APPLICATION

- Brushbond RFX is suitable for all types of structures including those in coastal environments
- It is also suitable for water tanks, reservoirs, drainage culverts, basements and roofs

COVERAGE

- 12 – 14 m² at 1 mm thickness (15 kg powder + 4.8 litre polymer liquid)
- 4 – 4.5 m² at 1 mm thickness (5 kg powder + 1.63 litre polymer liquid)

PACKING

- 15 kg powder + 4.8 litre polymer liquid (BB RFX powder + BB RFX Liquid)
- 5 kg powder + 1.63 litre polymer liquid (BB RFX powder + BB RFX Liquid)

MIXING/USAGE

Brushbond BB liquid is mixed with equal volume of water as per the proportion shown in the table and mixed with a slow speed drill. The powder component is added gradually to the liquid to avoid lump formation and mix for 2 – 4 minutes.

Brushbond RFX components	Brush application Indl. pack	Small pack
Brushbond RFX Powder	15 kg	5 kg
Brushbond RFX Liquid	4.8 L	1.63 L
Water	3 L	1 L



High build fibre reinforced acrylic / single component waterproof coating for terraces without removing Brickbat Coba or Screed

ADVANTAGES

- High build system provides higher dry film thickness of more than 1 mm in three coats
- The product can be applied directly on existing sound concrete, brickbat coba, screed concrete even without removal
- No protection screed required eliminating the additional weight due to protection layer
- Excellent bond to concrete and masonry and UV resistant
- Sloped roofs and tile roofs

AREAS OF APPLICATION

- Suitable for waterproofing of old and new roofs

COVERAGE

- 0.5 litre/m²/coat (3 coat application is recommended)

PACKING

- 4 and 20 litre containers available in 4 colours: White, Terracotta, Grey and Green

MIXING/USAGE

Apply Nitoprime AW primer (One liter of Nitoprime AW primer mixed with 500 ml water) followed by application of Brushbond Roof Guard in 3 coats to achieve total dry film thickness of 1 mm. The second and third coat of Brushbond Roof Guard shall be applied as soon as the first coat has reached touch dry state.

Nitocote CM 210



Two component acrylic polymer modified, elastomeric cementitious waterproof coating

ADVANTAGES

- Approved for use in contact with potable water
- Excellent bond to concrete and masonry
- Bonds to green or damp concrete
- Withstands both high **positive** (5 bar) and **negative**(3 bar) hydrostatic pressure
- Excellent crack bridging ability
- Long working life

AREAS OF APPLICATION

- Potable water retaining structures
- Potable water excluding structures
- Internal basement waterproofing
- Drainage culverts
- Wet areas: kitchens, bathrooms, shower rooms and swimming pools
- Foundations in contact with ground water under saline conditions

COVERAGE

- 10.8 – 11.7 m²/23 kg at 1 mm thickness for min 2 coats recommended for effective performance

PACKING

- 18 kg (powder) + 5 kg (polymer)

MIXING/USAGE

The liquid polymer is poured into a plastic or metal drum having a volume of at least 20 litres. To this, the powder is gradually added whilst mixing with a spiral paddle attachment on a slow speed drill. Mixing is continued until a lump free slurry is obtained.

Nitoproof 100/120



Bituminous waterproof and protective coating

ADVANTAGES

- Easy to use; Simple brush or trowel application
- Cold applied: No heating or dangerous in handling
- Liquid membranes: Can be applied to rough or contoured surfaces
- No joints: Continuous unbroken film
- Non toxic

AREAS OF APPLICATION

- Horizontal and vertical damp-proof membranes in sandwich construction for floors, walls and roofs
- Internal lining of water storage tanks included for potable water
- External treatment of below ground structures against water ingress and attack by aggressive ground water

PACKING

- Nitoproof 100: Supplied in 5, 20 & 200 litre containers
- Nitoproof 120: Supplied in 200 litre containers

COVERAGE

- Nitoproof 100 – 4.0 to 6.0 m²/litre dependent upon porosity and texture of the substrate
- Nitoproof 120 – 2.8 – 3.5 m²/kg on medium to smooth surfaces first primed with Nitoproof 100 gives dry film thickness approx. 250 microns per coat

MIXING/USAGE

Surfaces should first be primed with one full coat of Nitoproof 100 to ensure the adhesion of subsequent coats of either Nitoproof 100 or Nitoproof 120. Once the primer coat is dry, it may be overcoated with either further coats of Nitoproof 100 or Nitoproof 120 according to the requirements, allowing each to dry completely before applying the next coat.



Liquid applied single component polyurethane based elastomeric waterproofing membrane

ADVANTAGES

- Liquid applied hence no joints in the membrane
- Highly elastic – cures to give a permanently flexible resilient barrier
- Rapid installation – significantly reduces time spent on preparatory work and detailing
- Excellent adhesion – can be applied to a wide range of substrates.
- Impervious – outstanding properties ensure protection against corrosive soil conditions
- Thermally stable – irreversible chemical cure eliminates melting and flow at high temperature
- Excellent resistance to oxidation and embrittlement
- Mechanical damage to the membrane can be easily repaired by spot application

AREAS OF APPLICATION

- Ideal for a wide range of waterproofing applications such as foundations, basements, tunnels, ground floors, suspended floors, car decks, roof terraces, balconies, patios, inspection pits, water retaining structures (not potable water), sewage works and inverted roofs.

COVERAGE

- Nitoproof 600 Std: 0.76 m²/litre @1.3 mm

PACKING

- Nitoproof 600 Std: 19 litre drums

MIXING/USAGE

Nitoproof 600 Std. should be applied by brush, trowel, squeegee or airless spray (two coat application for standard grade on vertical surfaces) at a minimum wet film thickness of 1.3 mm (1.3 litre/m²).



Lokfix E is a range of anchoring adhesives used for installation of Post Installed Anchors with threaded rods & Structural re-barring in different civil engineering applications.

ADVANTAGES

- Product are designed to achieve High Bond Strength resulting in reduced anchorage depth & spacing under given loading conditions
- No additional mixing equipment required
- Low VOC
- Suitability for Dry , Damp & flooded concrete situations and also for Un-cracked & Cracked concrete
- C1 / C2 Seismic rating
- Multiple variants with gelling time ranging from 4 min to 20 min
- Range suitable for working temperature up to 20°C
- Suitable for variety of substrates – Concrete , Brickwork , Hollow Blocks
- Easy to dispense with twin cartridge packing

AREAS OF APPLICATION

LOKFIX E RANGE OF PRODUCTS ARE SUITABLE FOR ANCHORING

- Post Installed Re-bars
- Bolts of Structural steel columns
- Threaded rod anchoring systems for multiple applications like Side Rails, Cable Tray Brackets, Overhead Fire Fighting systems, External Facades

Lokfix E range has three different variants –

Lokfix E75 : Pure Epoxy Based Anchoring Adhesive

Lokfix E55S : Vinyl Ester Based Anchoring Adhesive

Lokfix E35S : Polyester Resin Based Anchoring Adhesive

PACKING

Lokfix E75: 12 x 385 ml Box

Lokfix E 55S and Lokfix E35S : 12 x 300 ml Box

MIXING/USAGE

Unscrew the fixing cap. Remove the plastic stopper. Screw the static mixer nozzle onto the cartridge. Place the cartridge into the application gun. Pull the trigger to extrude the Lokfix E75/E55S/E35S.

Important: extrude the initial material until the colour becomes consistent. This typically takes two or three full squeezes. Discard material that is streaky in colour.

Insert the nozzle to the back of the hole and pump the Lokfix material gently pulling back until the hole is 3/4 full. Ensure there are no voids in the resin. If the hole is too deep for the nozzle to reach the back, use a nozzle extender. If the cartridge is to be re-used, remove the mixing nozzle and re-apply the cap. When using again a new mixing nozzle will be required.



Plasticised expanding grout admixture for use in cement grouting of voids and honeycombs in concrete

ADVANTAGES

- Low permeability and contributes to long-term durability of grouts
- High fluidity – easy for placement and injection of grouts
- Gaseous expansion system compensates for plastic shrinkage and settlement in cementitious grouts
- High early strength development of grout without the use of chlorides

AREAS OF APPLICATION

- Used in cementitious grouts where a reduced water/cement ratio and positive expansions are required
- Applications include cement grouting of voids, ducts and post tensioned ducts, etc.

DOSAGE

- 225 gms/50 kg bag of cement

PACKING

- 225 gms pack and 25kg packs.

MIXING/USAGE

The contents shall be mixed into cement and mixed with required quantity of water using slow speed drill machine.



Free flow, high strength, non-shrink, cementitious precision grout

ADVANTAGES

- Gaseous expansion system compensates for shrinkage and settlement in the plastic state
- No metallic iron content hence no corrosion
- Pre-packed material overcomes onsite batching variations
- High ultimate strength ensure the durability of the hardened grout
- Free flow ensures high level of contact with load bearing area

AREAS OF APPLICATION

- Grouting of base plates of turbines, compressors, boiler feed pumps and other machine foundations
- Grouting of joints both vertical and horizontal in precast constriction etc.,
- It can also be used for anchoring a wide range of fixings. These include masts, anchor bolts and fence posts
- Further it can be used for bore packing in buildings

DOSAGE

- Water to powder ratio: pourable =0.13
- Yield: 12.5 litres at pourable consistency

PACKING

- 25 kg bags

MIXING/USAGE

The selected water content should be accurately measured into the mixer. The total content of the Conbextra STD grout bag should be slowly added and continuous mixing should take place for 5 minutes.



Non-shrink, free flow, general purpose cementitious grout

ADVANTAGES

- Non-shrink - Will continue to occupy the filled space without shrinkage. Continues to provide support to the bearing areas and dampens vibration
- Free flow - Ensures high level of contact with load bearing area. Also helps complete filling without voids. No need for external aids like rodding, poking, chaining etc
- Pre-packed and factory controlled - Consistency and reliability ensured. Site batching and blending variations eliminated Self-adhesive layer system makes installation quick, simple and reliable
- Iron free - No chance of deterioration by uncontrolled rust expansion, corrosion and staining of grout
- Chloride free - Does not cause corrosion of machine parts, anchor bolts etc., in contact with grout

AREAS OF APPLICATION

- Grouting of machine base plates, crane and transporter rails, standing equipment bed plates, stanchion bases, steel rolling mill beds, pump sets etc.

DOSAGE

- Water to powder ratio: Flowable = 0.15
- Yield: 12.5 litres at flowable consistency.

PACKING

- 25 kg bags

MIXING/USAGE

The selected water content should be accurately measured into the mixer. The total content of the Conbextra GP1 grout bag should be slowly added and continuous mixing should take place for 5 minutes.



High strength, epoxy resin grout

ADVANTAGES

- Excellent durability – high compressive, flexural and tensile strengths
- Cost effective – high early strength gain promotes minimum downtime and early commissioning of plant
- User-friendly – simple, full pack mixing to ensure that the performance characteristics are achieved
- Excellent in service performance – non-shrink capability ensures full surface to surface contact

AREAS OF APPLICATION

Provides a free flowing grout, for use where physical properties and chemical resistance of the hardened grout are of utmost importance. It is suitable for a wide range of heavy duty applications including:

- Structural infill where very high strength is required
- Rail track applications, to support heavy cranes, or on transporter rails
- Heavy industrial applications in steelworks, refineries chemical plants and electroplating works
- Underplate grouting to substantial structural elements

PACKING

- 1 litre pack

MIXING/USAGE

The entire contents of the hardener Can should be poured into the base container and mixed for 2 – 3 minutes or until uniform colour is achieved.



Rapid setting cement-based, water leak plugging mortar

ADVANTAGES

- Emergency water-stopping capability – sets in 8 – 10 seconds
- Single component – only the addition of clean water is required
- Excellent bond to the substrate
- Low exotherm – minimises thermal cracking
- Pre-packed formulation to overcome variation in site batching
- Contains no chloride admixtures

AREAS OF APPLICATION

- For the rapid temporary patching and plugging of concrete segments, concrete and brick tunnel linings, sewage system, below ground access chambers, pipes, basements, foundations and mines.

PACKING

- 1, 5 and 15 kg

MIXING/USAGE

Renderoc Plug should be added to clean water in the ratio of 3:1 respectively and placed immediately.

One part clean water: 3 parts Renderoc Plug
(measured by volume).



Shrinkage controlled, polymer modified, fibre reinforced cementitious repair mortar

ADVANTAGES

- Cost-effective – shrinkage control enables repairs to be completed “right at the first time.” Very low rebound loss is an additional cost benefit
- Enhanced durability – works in tandem with extremely low permeability to prolong effective working life
- User-friendly – specifically developed to provide an easy-to-apply product, suitable for local conditions
- Suitable for wet spraying/hand application particularly well suited to vertical and overhead repairs

AREAS OF APPLICATION

- Mass infill to large areas
- Repairs to irregular profiles
- Excellent for repairs to fire-damaged concrete
- Fast track repair programmes, where rapid application at high volume is required
- Single layer, high build applications

COVERAGE

- Minimum applied thickness: 40 mm
- Overhead sections: up to 150 mm
- Vertical sections: up to 200 mm

PACKING

- 25 kg bag

YIELD

- Approx 13.5 lt / 25 kg bag at 4.25 lt / bag water.



Cost effective, general purpose, non-shrink, cementitious micro concrete for economical repairs to damaged reinforced concrete elements

ADVANTAGES

- Ideal for areas where access is restricted and where vibration of the placed material is difficult or impossible
- Gaseous expansion system compensates for shrinkage and settlement in the plastic state
- Can be pumped or poured into restricted locations
- Low permeability
- Contains no chloride admixture

COVERAGE /YIELD

- Approximately 13 litre/25 kg bag at 0.19 water powder ratio

PROPERTIES

Renderoc RG : Compressive strength 50N/mm²

PACKING

- 25 kg bag

MIXING/USAGE

The optimum water content should be determined and accurately measured and added into the mixer. However it should not exceed 4.75 litres / 25 kg in any case. With the mixer running, slowly empty Renderoc RG bag into the mixer. Mix continuously for 5 minutes, ensuring a smooth even consistency of the mix.



Ready to use mortar for AAC blocks and fly ash bricks

ADVANTAGES

- No water curing required
- Pre-mixed mortar, requiring only water addition at site
- Excellent bond strength
- Fast & easy to apply

AREAS OF APPLICATION

- Bedding for fixing AAC blocks and fly ash bricks.

COVERAGE

- 40 kg bag when mixed with 10 - 10.8 L of water, yields 30.80 L of volume
- Apply at 3 - 4 mm thickness

PACKING

- 40 kg bag

MIXING/USAGE

- Add two third quantity of water in the mixing drum and pour powder slowly. The balance water shall be added in the end.
- The material shall be mixed mechanically using a slow speed drill fitted with a mixing paddle for minimum 3 minutes to get a homogeneous consistency.
- The substrate must be clean and free from dirt, oil, grease, loose particles. It is recommended to saturate the surface with water (S.S.D. Condition)
- The mixed mortar shall be spread over block in a uniform thickness of 3 to 4 mm.
- Firmly place the block on top with slight shear to ensure good contact and bonding



Epoxy resin-based concrete bonding agent. Used for bonding new cementitious materials with the old cementitious surfaces

ADVANTAGES

- High bond strength: Bond strength is more than the tensile strength of good quality concrete
- Barrier coat: Acts as a 'barrier coat' to the migration of chloride ions from host concrete

AREAS OF APPLICATION

- Used for bonding new cementitious materials to existing cementitious surfaces. For use on vertical and horizontal surfaces where mortar or concrete can be supported by formwork
- Ideal for extensions and repairs to structural concrete in buildings, loading bays, bridges, roads, bonded or granolithic floor toppings etc.

OVERLAY TIME

Nitobond EP

- The new concrete should be placed within 6 hours at 20°C

COVERAGE

Nitobond EP

- Approximately 2.6 m²/litre.
Actual coverage will depend upon the texture and porosity of the substrate being covered.

PACKING

- Nitobond EP: Available 0.5, 1 & 4 Litre packs

MIXING/USAGE

The 'hardener' and 'base' components should be stirred separately before mixing to disperse any settlement.



Mortar and screed modifier cum bonding agent

ADVANTAGES

- Simple to use – single component, gauged as required
- High – provides excellent bond to concrete, adhesion plaster, masonry, stone work, etc.
- Improves – gives weather resistant mortar with improved durability impermeability to chlorides and other harmful agents
- Reduces – provides waterproof screeds, plasters and permeability slurries
- Increases – compatible with all common hydraulic cements
- Versatile – compatible with all common hydraulic cements
- Cost effective – Nitobond SBR Latex is economical to use

AREAS OF APPLICATION

- For modifying and improving bonding of floor toppings, renderings and mortars; repair of worn, damaged or spalled concrete; repair of large cracks; polymer modified floor screeds; waterproof plasters for masonry and slurries

COVERAGE

- Slurry primer – approximately 4 – 5m²/litre depending on substrate porosity

PACKING

- SBR Latex : 0.2, 1, 5, 20 & 200.litre containers



Acrylic emulsion cement modifier and water based concrete bonding agent/Latex acrylic polymer based cement modifier cum bonding aid with waterproofing property

ADVANTAGES

- Good adhesion – provides good bond to concrete, masonry, stone work, plaster and block work
- Increased strength – improves tensile and flexural properties of mortar
- Versatile – compatible with all common hydraulic cements
- User-friendly – application by brush/spray
- Improves cohesion – no bleeding and segregation

AREAS OF APPLICATION

- For improving and bonding floor toppings, mortars and renders
- As a bonding agent for Renderoc and other cementitious mortars
- Polymer modified mortars and screeds for reinstatement of worn out/damaged concrete
- Polymer modified concrete for improving the impermeability and there by enhancing the waterproofing property

COVERAGE

Nitobond AR : Approximately 6 - 8m²/ litre depending on substrate

Nitobond AR Std :

As a cement modifier : Approximately 6 - 8m²/litre depending on substrate

As a bonding agent : Approximately 3 - 4 m²/litre* depending on substrate

As waterproofing agent : 2-5% of Nitobond AR Std. shall be mixed with concrete by weight of cement.

PACKING

- Nitobond AR is supplied in 1, 5 and 20 litre plastic containers.
- Nitobond AR Std. bonding aid is supplied in 1, 5, 20 & 200 litre containers

MIXING/USAGE

As a cement modifier:1 litre Nitobond AR Std.:

5 kg cement:15 kgs graded quartz sand.

As a bonding agent:0.5 part cement:

1 part Nitobond AR Std.by weight.

As waterproofing agent:2 – 5% of Nitobond AR Std. shall be mixed with concrete by weight of cement.



Colourless silicon water repellent coating for concrete masonry, stone clad surfaces, etc

ADVANTAGES

- Ready-to-use
- Versatile – effective on old and new surfaces
- Self-cleaning
- Protects brickwork
- Protects concrete
- Colourless – preserves natural colour and texture of the substrate
- Reduces efflorescence

AREAS OF APPLICATION

- Used to provide water repellent surface with improved self-cleaning properties on exterior building brick work, concrete, natural or cast stone, tiles and concrete surfaces

COVERAGE

- 4.5 – 9 m²/litre (depending on the surface)

PACKING

- 1, 5 and 20 litre containers

MIXING/USAGE

Nitocote SN522 water repellent should be applied evenly by spraying or brushing. Ensure an even coat over the entire surface. Porous surface should be well saturated with a two coat application.



Two component epoxy zinc rich primer used as an anti-corrosive primer for exposed steel reinforcements

ADVANTAGES

- Anti-corrosive
- Time saving – Touch dry within 45 minutes
- Excellent adhesion

AREAS OF APPLICATION

- Recommended for priming exposed steel reinforcement for use with Fosroc concrete repair mortars
- The product actively resists corrosion within the confines of the repair location

COVERAGE

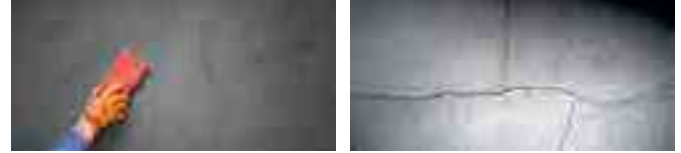
- 4 – 5 m²/litre/coat

PACKING

- 1 and 5 litre packs

MIXING/USAGE

Mix both components base and hardener thoroughly until a homogeneous mixture is obtained. A slow speed heavy duty drill fitted with a paddle is recommended for mixing.



Pre-packed cement based ready to use plaster

ADVANTAGES

- Ready-to-use, only addition of water is required at site
- Better adhesion to substrate
- Reduced shrinkage cracks
- Reduced water absorption, hence enhanced durability
- Less rebound losses

AREAS OF APPLICATION

- For external and internal plastering - on walls, ceilings, columns and beams
- All blocks masonry works
- Brick and stone masonry works

PACKING

- 40 kg bag

COVERAGE

- 14 to 15 sqft per bag of 40 kg at 10 - 12 mm thickness.
- Coverage may vary depending on the substrate condition

MIXING/USAGE

- Mix Renderoc Ready Plaster to the measured quantity of water using mechanically powered mixer for 5 minutes to ensure consistency free of lumps.
- Prepare the surface before application by removing oil, bond inhibiting agents, dirt, dust and laitance.
- The porous and absorbent substrates need to be pre-wetted prior to application.
- Apply the mixed plaster uniformly on the substrate using a steel trowel.
- The plaster can then be levelled to a desired finish using masonry tools like straight edge and plumb bob.



High performance two component elastomeric cementitious damp-proof coating

ADVANTAGES

- Suitable for treatment of damp patches from negative side
- Withstands high hydrostatic pressure from both negative & positive sides
- Excellent crack bridging ability
- Easy application by brush, roller, trowel or spray
- Bonds to green or damp surface
- Provides long lasting protection against efflorescence

AREAS OF APPLICATION

As a damp proof coating on to plastered surfaces before wallputty is applied.

PACKING

- 5 kg and 15 kg packs

COVERAGE

- The approximate coverage at even consistency is 15 to 16 sq.ft / kg /coat.

MIXING/USAGE

- Pour the polymer liquid into a suitable mixing vessel.
- Slowly add powder component and mix using a slow speed drill fitted with mixing paddle for 2 to 3 minutes.
- Brush apply on the cleaned walls using short stiff brush.



White cement based putty

ADVANTAGES

- Smooth finish
- Provides an ideal base as a primer
- Excellent workability
- No peeling, flaking or blistering

AREAS OF APPLICATION

- Interior & exterior walls
- Plastered brick and block wall
- Concrete blocks and panels
- Pre-cast walls & ceilings

PACKING

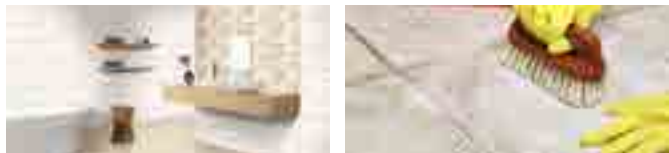
- 1 kg, 5 kg, 20 kg, & 40 kg packs

COVERAGE

- 3.25 sq.m/mm thickness/kg.

MIXING/USAGE

- Mix RenderocWallputty slowly in @ 35 - 40% water by volume.
- Mix vigorously manually or by an electric putty mixer for about 5 -10 minutes, until a creamy, paste-like consistency is obtained.
- The substrate should be free from dust, grease and loose materials. This can be removed with the help of sand paper, putty blade or wired brush. Pre-wet the surface properly before application.
- Apply a coat of the thoroughly mixed putty on the pre-wet wall in a bottom to up direction.
- After the first coat has dried, rub the wall gently with sponge or with a putty blade to remove loose particles.
- After a gap of minimum 3 hours, apply the second coat.
- Remove any blade marks and let surface dry overnight before applying paint.



Multipurpose cleaning and etching agent. Removes mortar droppings and stains from surface

ADVANTAGES

- Rapid action
- Non-corrosive
- Safe with metals (except zinc and galvanised steel), wood, glass and plastic
- Used for cleaning brickwork, small tools, tiles and etching of concrete floors

AREAS OF APPLICATION

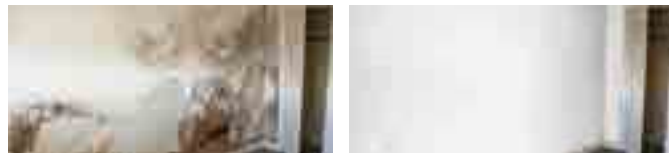
- For the removal of mortar and plaster runs, droppings and stains from brickwork and concrete surfaces. Also for removal of hardened concrete tiles from tools, machinery and equipment, or rust and mill scale from steelwork
- Suitable for etching of concrete floors and surfaces prior to application surface coatings

PACKING

- 0.5, 1, 5 and 20 litre packs

MIXING/USAGE

Depending upon the area of application dilution with 1 to 4 parts of water with Reebaklens is recommended.



An aqueous solution of Salt Neutralizer

ADVANTAGES

- Has an ability to overcome the problem of salts in mineral building surfaces
- Suitable for a wide range of substrates from new plasterwork to old stone

AREAS OF APPLICATION

- Mineral building surfaces from new plasterwork to old stone.

PACKING

- 1.0L &.4.0L

MIXING/USAGE

Scrub off or remove all loose salts. Thoroughly soak the affected area with clean tap water. Apply Reebaklens Salt Wash by brush to areas showing salts contamination. Under most circumstances one application will be sufficient. Where heavy dampening on old brickwork is being treated use Reebaklens Salt Wash supplied. On new plaster finishes or where the dampening is light Reebaklens Salt Wash can be diluted with water up to 50/50. Allow to dry the surface at least 24 hours. After proper drying apply the paint as per regular procedure. Do not apply paint at any time until all treated areas are thoroughly dry Advantages.



High performance environmental friendly mould release agent

ADVANTAGES

- Ensures easy release, good fair-faced concrete with reduced blow holes
- Can be used on all types of formwork like wood, aluminium, steel etc.
- Minimises surface blemishes and staining
- Minimises cleaning of shutters before re-use
- Reduces opportunity of damage to formwork, extending usable life
- Environmental friendly - Non-hazardous, having flash point >160°C

AREAS OF APPLICATION

For easy and stain free release of concrete moulds and all types of formwork like wood, aluminium, steel etc.

COVERAGE

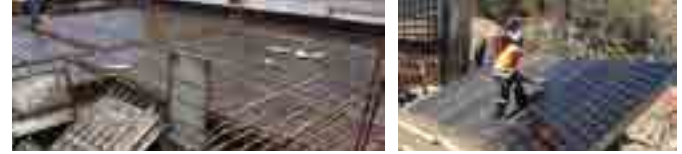
A coverage between 20 to 60 Sqm per litre is possible depending upon the porosity and texture of mould surface

PACKING

- Reebol is supplied in 235 litre, 200 litre, 20 litre and 5 litre containers

MIXING/USAGE

Reebol can be applied by brush, sponge or conventional mould oil-sprayer. If a mould oil-sprayer is used, care should be taken to ensure that the correct nozzle size is chosen. Stir the contents of the container thoroughly before use. Apply one coat of Reebol thinly and evenly over the entire surface. Only the thinnest coating necessary to achieve effective coverage should be applied. Excess application is uneconomical and may lead to surface dusting.



Concentrated and emulsified chemical mould release agent

ADVANTAGES

- Non-staining : No cleaning of unsightly oil stains if plastering is not required
- High quality : Produces really fair faced finish concrete
- Versatile : Can be used on all types of moulds
- Minimises cleaning : Makes cleaning of form faces between pours very easy
- Concentrate form : Reduces storage and transport costs
- Water based : Only requires water for dilution

AREAS OF APPLICATION

For easy and stain free release of concrete moulds and formwork of all types. Particularly where wooden formwork is used and de-moulding or stripping times exceed 24 hours

COVERAGE

Reebol Emulsion Extra - 1ltr : 6 ltr Water : 80/180m²

PACKING

- 5, 20 and 200 litres

MIXING/USAGE

First dilute Reebol Emulsion Extra concentrate in the proportion of 1:6 with water, using a clean container and stirring thoroughly until evenly mixed. If the solution is not used the same day, it should be stirred again before use and may require very good stirring after 5 days. Apply the Reebol Emulsion Extra 1:6 water dilution to the face of the form work by spray, brush or cloth. Only one coat should be applied (as thinly as possible except on very absorbent new timber where two coats may be necessary for the first application only) and allow to dry. If the form work is not used for several days, a further coat may be applied.



Water based concrete curing compound

ADVANTAGES

- Single application : Forms moisture barrier for whole of the curing period.
- No other curing necessary : Eliminates use of water, hessian or sand completely.
- Reliable : No risk of erratic or poor curing and ensures that cement hydrates efficiently.
- Ensures hard-wearing surface : Minimises risk of drying shrinkage, cracks and dusty surfaces.
- Easy and safe spray application: Non-toxic and non-flammable.

AREAS OF APPLICATION

Used for concreting generally but especially useful for large areas of concrete such as pavements, runways and bridge decks; also for vertical or sloping surfaces as on towers, chimneys, canal linings, columns and beams, where water curing is difficult or unreliable.

COVERAGE

- 200 to 285 ml per m²

PACKING

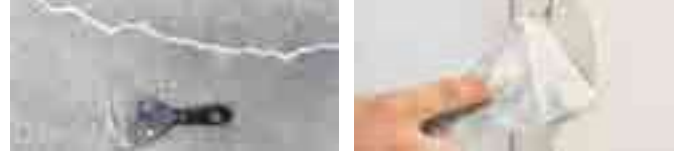
- 5, 20 & 200 litres

MIXING/USAGE

Pigmented grades should be stirred before use to ensure even dispersion of pigment.

Exposed concrete slabs: Concure WB should be spray applied on to the newly placed concrete slab as soon as possible after it is free from visible surface water, e.g. typically 1 to 2 hours after placing.

Shuttered and precast concrete: Concure WB curing agent should be spray applied to all surfaces as soon as formwork has been removed or the element demoulded.



Fast setting flexible acrylic sealant/gap filler

ADVANTAGES

- Fast setting, easy-to-apply
- Flexible seal
- Excellent adhesion to most building materials
- Non-staining
- Can be over painted or papered

AREAS OF APPLICATION

- Ready-to-use crack filling paste, wall/ceiling, door and window frame surrounds, skirting, etc.

PACKING

- Decofill acrylic sealant is supplied in cartons containing 25 cartridges, of 310ml each

MIXING/USAGE

Surfaces shall be clean, dry and free from grease. Decofill acrylic sealant adheres to most materials common in the building industry including concrete, brickwork, plaster, wood and glazed tiles.

Apply the sealant using a sealant gun or spatula and tool the sealant off within 15 minutes of application using a scraper or tooling stick dipped in clean plain water.



Single part, non-shrink, cementitious, crack filler for plaster, masonry and concrete

ADVANTAGES

- Single component - Easy to use
- Versatile - Can be used for cracks in exposed conditions on plaster, masonry or concrete up to 20mm width
- Non sagging – can be used for horizontal, vertical and overhead applications
- Good adhesion – effective bonding with substrate
- Non Shrink – shrinkage cracking eliminated
- Hydrophobic - enhanced waterproofing property

AREAS OF APPLICATION

- Renderoc CS is used for filling cracks on plaster, masonry and concrete substrates

PACKING

- Renderoc CS is supplied in 1kg packs

COVERAGE

- About 30 RM for a V groove crack of 6mm x 6mm for 1 kg pack.
The actual coverage may vary depending on the substrate conditions

MIXING/USAGE

Renderoc CS shall be mixed with water adopting w/p ratio 0.23 by weight or a mix proportion of 1 part of water to 3.0 parts of Renderoc CS, by volume. Thorough mixing shall be carried out till a smooth, homogenous paste is obtained. The mixed paste is filled into the groove by gloved hand and the surface finished using a trowel. This is continued till the full length of crack is sealed.



Two-part polysulphide sealant

ADVANTAGES

- Forms a tough elastic rubber-like seal
- Accommodates continuous and pronounced cyclic movement
- Excellent adhesion to most common substrates
- High resistance to ageing influences, physical damage and climatic extremes

AREAS OF APPLICATION

Thioflex 600 is a two part sealant based on a liquid polysulphide polymer. This is available in two grades Gun grade and Pourable grade. Thioflex 600 PG is a Pourable version designed for use in horizontal joints. Adhesion is excellent to most common building substrates. The product is particularly recommended for sealing horizontal structural expansion joints in most civil engineering structures like building superstructures, subways, basements, floors and reservoirs.

PACKING

- Both Gun Grade and Pourable Grade - 2.5 L pack

MIXING/USAGE

Gun grade: Both the base component and curing agent are supplied ready for mixing in a single tin. Mix thoroughly using a slow speed drill (300-500 rpm) fitted with a paddle stirrer for a full 5 minutes.

Only thorough mixing will result in proper curing. Immediately after mixing, load the sealant into the gun by means of Gun Filling Device and apply to the joint.

Pouring grade: Thioflex 600 pouring grade is supplied in two separate containers. The small container contents should be poured into the other tin, and mixed as per the gun grade instructions. The pouring grade may be poured directly into horizontal joints or loaded into the Gun for application to horizontal joints less than 15mm wide.



General purpose tile adhesive

ADVANTAGES

- Excellent grab
- Easy to mix and spread
- Pot life >60 minutes
- Conforms to IS 15477 Type I

AREAS OF APPLICATION

- Fixing of ceramic and clay tiles in dry indoor applications

COVERAGE

- 2-3 sqft / kg at 3 mm thickness

PACKING

- 20 and 40 kg bags

MIXING/USAGE

- Nitotile GP should be mixed with clean potable water in the ratio of 4 : 1 by weight (4 part powder : 1 part water)
- A slow speed drill fitted with a mixing paddle is recommended for mixing
- Add powder to water and mix until a uniform, lump-free consistency is achieved
- Mixed material should be spread on the substrate up to a uniform thickness of 3-4 mm, and then combed horizontally with a serrated trowel.
- Place tiles firmly into adhesive bed within the recommended open time, ensuring good contact with a twisting motion and without leaving any voids.
- Suitable spacers should be placed around the tiles.



High performance tile adhesive

ADVANTAGES

- High adhesion strength
- Good slip resistance
- Suitable for submerged conditions
- Conforms to IS 15477 Type II

AREAS OF APPLICATION

- Fixing of ceramic and vitrified tiles
- Kitchens and bathrooms

COVERAGE

- 2-3 sqft / kg at 3 mm thickness

PACKING

- 20 and 40 kg bags

MIXING/USAGE

- A slow speed drill fitted with a mixing paddle is recommended for mixing. Powder to water ratio is 3:1
- Add powder to water and mix until a uniform, lump-free consistency is achieved.
- Mixed material should be spread on the substrate up to a uniform thickness of 3 - 4 mm and then combed horizontally with a serrated trowel.
- Place tiles firmly into adhesive bed, ensuring good contact with a twisting motion and without leaving any voids.
- Suitable spacers should be placed around the tiles.
- Do not disturb the fixed tiles up to 24 hours from the application.



Granite and marble tile adhesive

ADVANTAGES

- High bond strength
- Quick fixing
- Good grab for heavy duty stone cladding
- Conforms to IS 15477 Type III

AREAS OF APPLICATION

- Granite tiles
- Stone tiles
- Marble tiles

COVERAGE

- Approx. 2 – 3 sqft / kg at 3 mm thickness

PACKING

- 20 kg and 40 kg bags
- Available in grey & white colours

MIXING/USAGE

- Nitotile GTA should be mixed with clean potable water in the ratio of 4 : 1 by weight
- A slow speed drill fitted with a mixing paddle is recommended for mixing.
- Add powder to water and mix until a uniform, lump-free consistency is achieved.
- Mixed material should be spread on the substrate up to a uniform thickness of 4 - 6 mm and then combed horizontally with a serrated trowel (thickness can vary depending on roughness)
- Place tiles firmly into adhesive bed, ensuring good contact with a twisting motion and without leaving any voids.
- Suitable spacers should be placed around the tiles.
- Do not disturb the fixed tiles up to 24 hours from the application.



Multi-purpose tile adhesive

ADVANTAGES

- Excellent grab
- Excellent slip resistance
- High bond strength
- Conforms to IS 15477 Type IV

AREAS OF APPLICATION

- Tile on tile
- Glass mosaic tile fixing
- Vitrified tiles fixing
- Tiles in swimming pools

COVERAGE

- 2-3 sqft / kg for 3 mm thickness

PACKING

- 20 kg and 40 kg bags
- Available in grey & white colours

MIXING/USAGE

- Nitotile MPA should be mixed with clean potable water in the ratio of 4 : 1 by weight
- A slow speed drill fitted with a mixing paddle is recommended for mixing.
- Add powder to water and mix until a uniform, lump-free consistency is achieved.
- Mixed material should be spread on the substrate up to a uniform thickness of 3 - 4 mm and then combed horizontally with a serrated trowel.
- Place tiles firmly into adhesive bed, ensuring good contact with a twisting motion and without leaving any voids.
- Suitable spacers should be placed around the tiles.
- Do not disturb the fixed tiles up to 24 hours from the application



Cementitious tile joint filler

ADVANTAGES

- Low cost service life - mould resistant, tropical grade
- Can be used in submerged conditions
- Easy to apply - just add water for a thixotropic, non-slump grout

AREAS OF APPLICATION

- Kitchens and bathrooms
- Tile claddings

PACKING

- 1 kg pack

MIXING/USAGE

- Measuring 300 ml of water for 1 Kg of tile grout, add powder to water and mix until uniform lump free paste is produced.
- The tile joints to be grouted should be cleaned properly.
- Apply Nitotile mixed grout to the spaces between the tiles using spatula or putty blade. Work the mixture into the joints and around the edges. Remove surplus material from the face of the tiles.



Water miscible epoxy resin tile grout

ADVANTAGES

- Resistant to mild chemicals and acids
- Solvent free - can be used in confined areas
- Good resistance to abrasion and impact
- Non-staining and easily cleaned
- Resists bacterial growth

AREAS OF APPLICATION

- Bathrooms, fountains and swimming pools
- Commercial & residential buildings

PACKING

- 1 kg and 5 kg

MIXING/USAGE

- Transfer the base and hardener components into a suitable container and mix for 30 seconds using margin trowel or slow speed drill mixer.
- The filler component is then added and blended using a slow-speed drill until a uniform, homogeneous lump free mixture is obtained.
- The tile joints to be grouted should be cleaned properly.
- Use a hard rubber grout float, compact the grout into the joints
- Strike off excess materials diagonally to the grout lines.
- Plug open-ended joints with the stiffer mix to prevent any slumping of the grout joints from occurring.
- Clean off surplus grout within 30 minutes of application.

