



C340 Crossrail
 London, UK

Client
 Crossrail

Contractor
 Taylor Woodrow

Sector
 Rail

DATE
 March 2014

PRODUCTS

- Supercast Rearguard
- Supercast Hydrofoil
- Supercast SW20 & SWX

THE PROJECT

The C340 Victoria Dock project located in East London forms part of the larger Crossrail construction project. The project required a 320 linear metre tunnel to be waterproofed prior to a new station being installed.

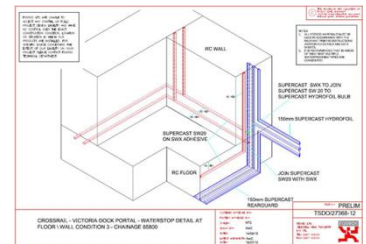
Crossrail is Europe’s largest infrastructure project at £16 billion. Stretching from Maidenhead and Heathrow in the west, across to Shenfield and Abbey Wood in the east, the new railway will cover over 100km of track including 21km of new twin-bore rail tunnels and nine new stations. From improving journey times across London, to easing congestion and offering better connections, Crossrail will change the way people travel around the capital and offers a great opportunity for the new Fosroc UK rail team to get to work.

THE SOLUTION

Over the past 12 months Fosroc UK have focused their efforts into specialist market sectors including rail. The rail team made contact with the designers of the project at Victoria Dock in the early part of 2013. Initial discussions showcased the full Fosroc offer on waterproofing and led to meetings with design teams and presentations to the client Crossrail promoting our offer. Fosroc UK used its highly experienced sales and technical staff to produce a waterproofing solution using Supercast PVC waterstop and Supercast SW hydrophilic waterbar. Materials including special angles were hand made at our Tamworth manufacturing plant and passed the scrutiny of the Crossrail approvals team and materials used on C340 have since been passed for use on other rail projects.

THE BENEFITS

A crucial factor to Fosroc UK winning this work was the focus that the new rail sector team had on the project and the unique way Fosroc UK can take manage a project from design to installation on site. Some of the details drawn by the technical department have been unique to a scheme like Victoria Dock. On top of this was the ‘hands on’ support the rail team offered the installing contractor Lorclon. The team did a series of ‘toolbox talks’ including full training of the materials and equipment required for use. Marcin Nowak, Project Manager for Taylor Woodrow “The Fosroc brand is always taken under consideration due to quality which follow behind it on both material and documentation.”



One of the many unique details drawn for C340



Training session for installers



Supercast PVC installed on C340 Victoria Dock