



Wynn Palace Macau

Client

Wynn Resorts (Macau)

Architect

Wong & Ouyang

Contractor

Leighton Construction Ltd

Sector

Hotel / Entertainment

DATE

2013 - 2014

PRODUCTS

- Proofex Engage
- Proofex 3000MR
- Proofex Sheetdrain
- Polyurea WCS

THE PROJECT

The Wynn Palace Project is located at the Cotai Strip, Macau. This US\$2.5 Billion (MOP 20 Billion) Project has a site area of 210,000 m², and includes the construction of a luxury hotel with 2000 hotel rooms, a mixed-use podium comprising gaming, dining, retail, and convention facilities, a nightclub and numerous specialist attractions.

As the project is built on reclamation land, it requires a basement membrane with waterproofing and also gas proofing properties. The project has a tight schedule and the client is concerned the selected membrane system must show capability to be installed in rainy season. The client is also looking for a supplier who can provide a complete basement solution including the joints, pile cap and pile head waterproofing.

THE SOLUTION

Proofex Engage, a key lock polyethylene membrane was selected. The key lock property is most suitable to be used in the reclamation area where soil settlement is severe, as the membrane will mechanically bond to the basement floor slab. Polyurea WCS, a fast setting polyurea membrane, is used in sealing the Proofex Engage end joints and at around pile heads. The quick setting time of Polyurea WCS (several minutes) allows the Proofex Engage system not to be affected by wet weather immediately after application.

Proofex 3000MR was selected for the basement wall (Protection by Proofex Sheetdrain 80 before backfill). Supercast PVC and Supercast SW Waterstop are used in all joints for a complete basement protection.

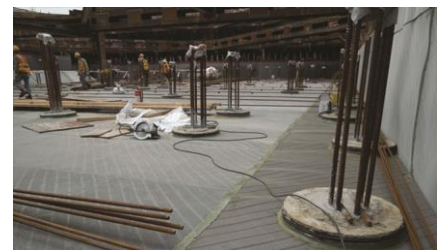
Apart from product systems, the client is particularly concerned on the quality of installation. "The ability of Fosroc in providing On Site Specialist Support, Practical Advices and Quick Proposal in resolving issues are key factors in convincing the Wynn client" as quoted by Leighton personnel.

THE BENEFITS

The waterproofing work is ongoing and Proofex Engage system is already proven to be extremely versatile in accommodating the wet weather, various shapes of pile caps and trenches. The fast and easy application actually results in advance of the working programme.



Proofex Engage applied on-site



End joints & pile heads sealed with fast setting Polyurea WCS



Proofex Engage in various shapes