

Eldeco Center Delhi (India)

CUSTOMER

Eldeco

SECTOR

Building Segment

DATE

2019-2020

PRODUCTS

- Fosroc Membrane HDPE-P
- Fosroc Membrane Sealed Tape
- Sanded Tape
- Proofex 3000
- Proofex Primer Tackcoat



THE PROJECT

Eldeco Group, based in Delhi, are in the real estate development business. Their main focuses are the development of residential complexes, hotels and malls. They are now planning to build a huge mall in Lajpat Nagar, Delhi. The area is spread across 12,000 sqm with more than 800 sqm for development. The mall is being constructed in collaboration with BMRCL

THE SOLUTION

The client is very quality conscious and therefore asked for a waterproofing solution that would be 100% watertight. As a world leader in constructive solutions, Fosroc suggested Fosroc Membrane HDPE-P (pre-applied, pressure sensitive HDPE membrane), which bonds directly to the poured concrete below the raft, in conjunction with Proofex 3000 (SBS-based membrane with HDPE lining), a post-applied membrane for the retaining wall.

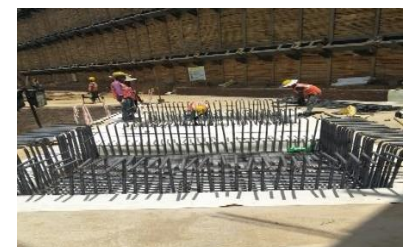
THE BENEFITS

The client was satisfied with our performance and the quality of the product pertaining to its technical features, as described below:

- Lateral water tracking will not occur since it is a fully bonded system
- Application of the membrane is very easy
- Reinforcement can be directly laid on Fosroc Membrane HDPE-P
- Settlement of the subsoil after application will not affect the performance of the membrane, as it is a fully bonded system



Construction site



Reinforcement



Retaining wall